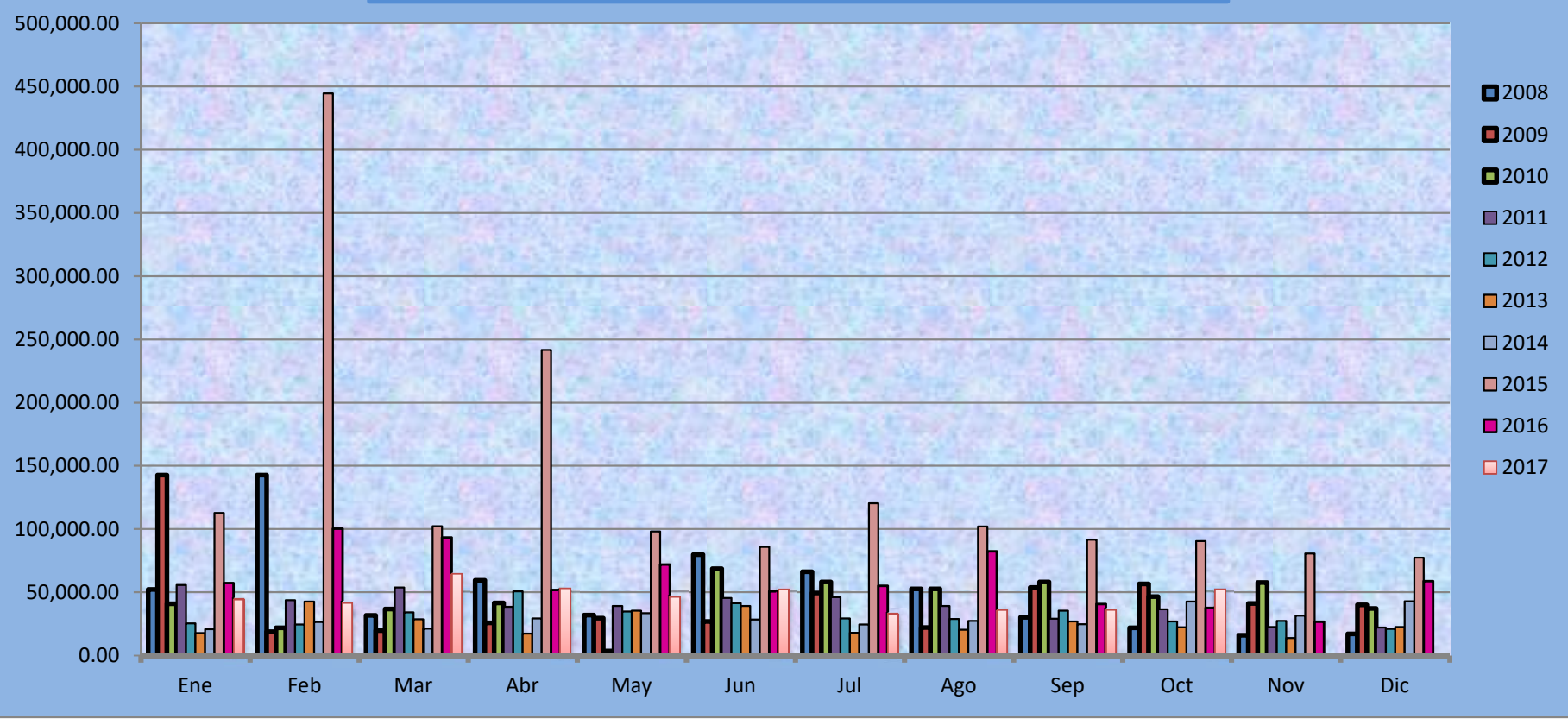


Años	Ene	Feb	Mar	Abr	May	Jun	Jul	Ago	Sep	Oct	Nov	Dic	TOTALES
2008	52,281.37	142,743.30	31,641.52	59,440.82	32,018.14	79,857.90	66,279.06	52,637.82	30,286.17	21,923.58	16,020.44	17,041.00	490,414.12
2009	142,743.36	18,928.48	19,817.58	25,870.01	29,565.23	26,883.86	49,434.79	22,195.51	53,717.94	56,684.55	41,202.69	39,986.08	527,030.08
2010	40,804.56	21,875.58	36,645.62	41,477.54	3,477.63	68,654.63	58,205.28	52,634.87	58,064.54	46,636.14	57,646.75	37,190.51	523,313.65
2011	55,681.00	43,658.73	53,875.48	38,488.96	39,106.11	45,394.45	46,093.64	39,244.14	29,098.43	36,457.23	22,457.25	22,169.98	471,725.40
2012	25,438.87	24,548.48	34,082.23	50,634.74	34,891.23	41,398.05	29,235.52	28,958.23	35,359.02	26,857.82	27,311.21	20,996.30	379,711.70
2013	17,695.48	42,716.59	28,655.06	17,240.54	35,539.96	39,113.09	17,951.73	20,319.02	26,907.30	22,399.98	13,801.98	22,659.23	304,999.96
2014	20,843.72	26,527.25	21,160.74	29,345.23	33,398.86	28,516.00	24,460.56	27,357.77	24,732.05	42,629.39	31,535.56	42,783.66	353,290.79
2015	112,667.00	444,539.34	102,188.56	241,726.95	98,046.39	85,866.82	120,297.68	102,092.41	91,534.51	90,420.05	80,755.22	77,446.35	1,647,581.28
2016	57,299.97	100,262.24	93,351.15	51,881.98	71,824.38	50,821.32	55,005.18	82,340.38	40,781.20	37,530.38	26,806.45	58,867.19	726,771.82
2017	44,194.25	41,041.25	64,097.29	53,041.75	46,429.50	52,129.81	32,940.96	35,464.69	35,687.07	52,454.16			457,480.73

**AUTORIDAD DE PROTECCIÓN AL CONSUMIDOR Y DEFENSA DE LA COMPETENCIA
JUZGADO EJECUTOR
COMPARATIVA DE RECAUDACIÓN
1 AL 30 DE SEPTIEMBRE DE 2017**



FUENTE: ACODECO